

Alain Rouveure Galleries . Gardens . Café

The Alain Rouveure Nepal Fund

"Making a Difference where it Matters"

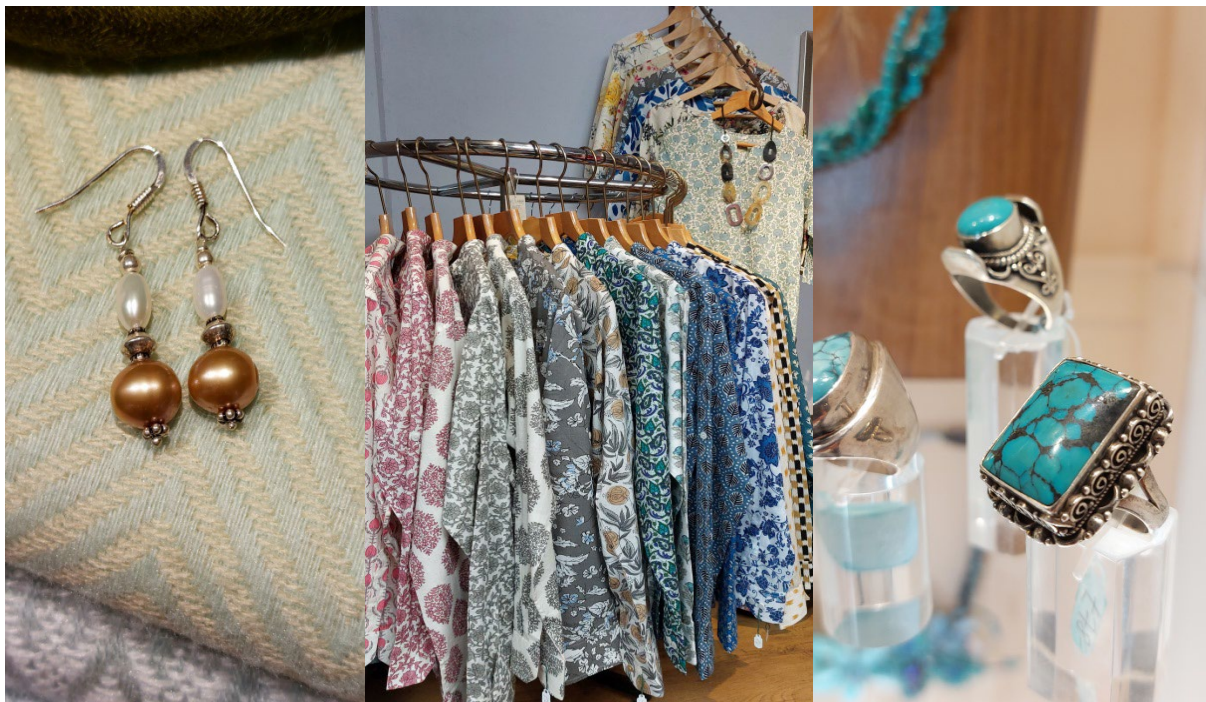
Dear Friends,

I trust all is well with you all.

I came back from two and half months in beautiful Nepal, leaving Kathmandu in 32 degrees C... arriving at Birmingham airport loaded like a packed mule!

I keep working with the same craftsmen and women, talented, dedicated and honest souls. Many have become firm friends over several decades. They have been producing more elegant shirts for men and blouses for ladies in lovely printed cottons, new shawls and scarves in softest pashmina, eye watering handmade silver jewellery and decorative glass **exclusively for the Galleries.**





Hand-knotted rugs using 100% Tibetan sheep's wool dyed in pure organic/vegetable pigments are still regularly being commissioned for clients and for the Galleries. People can choose from over 400 traditional designs and can request particular colour combinations to suits their need, making each high quality rug totally unique.

For more and more people, ethical production is as important as the quality of the product, and because I do not have to go through middle men but work and purchase directly from the makers, not only I appreciate the effort put into every piece that will be in the Galleries but we are also able to offer them at extremely competitive prices.

The Gardens continue to attract and enchant visitors who appreciate the peace and beautiful energy of our place. This is the reward for us maintaining such a Haven. The roses, with over 40 new additions last autumn, are outstanding right now. The calendulas, coming from Buddha's birthplace in southern Nepal, are well on their way to be again a riot of colour all Summer.



The Himalayan Coffee Shop headed by our fabulous Raju has been very busy since it opened in mid-March. Many guests tell us they have missed his signature dhal soup and missed the peace and tranquillity of this Heavenly place.

Our home-grown lettuces are already being harvested for the Salades Nicoises, only a few feet away, still very much alive by the time they end up on your plate.





I hit the floor running and resumed my **Sound Sessions** with Singing Bowls and Gongs at the Galleries. We added more dates as they are booking up so fast. To know more about them and about the benefit of the vibrations emitted by these extraordinary healing tools and to book in order to attend, go to the page **The Healing Sound Centre** on our website.



The newsletter is like a journal for the many that follow us and want to catch up and it may be an eye opener for our many new friends to the Galleries and to my social work.

My two and half months in Nepal were action-packed, they always are.

Tom joined me for the last two weeks to meet some of the new children we have taken on and to attend the **Hand Over** of the earthquake resistant Community Building we sponsored in Etay village. More below.

From the beginning of my relationship with Nepal and its amazing people back in 1980, the bond based on trust and respect has always been my guideline. My yearly visits mean that I am able to closely monitor our help to our various projects and to the many disadvantaged young and not so young souls (23 to date) in rural Nepal to have a better life (and in some cases simply a Life) knowing that hard-to-raise funds have been used wisely.

I shared my time between the Kathmandu valley with my suppliers and close friends and with the small village of Etay, a typical small community in rural Kavre district some two hours from the capital.

For those new to my social work in Nepal, Etay is where Namo Buddha Boarding School and the earthquake resistant Community Centre we have built are located.

Namo Buddha Boarding School is the private school where many of the children we sponsor study and live. Most are from really struggling families and, for those who have been abandoned by their parents at an early age, it is their only Home.

All are growing up fast and doing really well with many achieving high grades with excellent exam results.



We have many requests for news of little Anish, our brave now 17 years old boy with serious kidney issues. Life has dealt him a difficult hand but, with your financial support, the costly treatment he is following for his kidneys not processing protein naturally is working. It is still slow but there is progress so we must keep on.

As I mentioned in a previous Newsletter, Anish and his parents are well aware of the interest, love and financial support many of you have shown and they want to thank you for it. This support makes such a big difference to simple folks like them, feeling overwhelmed by events.

The news about little Rabin and his sister Rabina are good as both are well and now studying and boarding at Namo Buddha School. Their Mum was offered a position as staff in the school and after her children settled in their new surroundings and made many friends with the other children we care for, she chose to return to her village. Relatives of her dead husband helped rebuild the small house damaged by the landslides and she has been offered work on others land. Mum and her children see each other during holidays, so all is well.



You may already know that unlike many charitable organisations, **The Alain Rouveure Nepal Fund** is a UK registered charity with next to no administration costs. My yearly travels and stays over in Nepal are wholly funded by the Galleries and by myself in order that the money raised in donations can go directly where it is meant to.

Funds for a small charity like ours are difficult to raise so any financial contributions make it possible for us to keep Anish alive and the other children under our care healthy, educated and most importantly in a world where child trafficking is getting worse every year, safe.

We thank you for your contributions. Please keep them coming if you can and share this information with your Friends.

My yearly duties in coaching and de-stressing Year 7 to 10 students before sitting their exams were again very well received and bearing fruits with high grades achieved by most. Pep talks and grounding meditations with the sound and vibrations of singing bowls always do the trick. It is all about taking the stress and the fear away so that their minds can concentrate on downloading the information in a calm and collected manner.

Our Year 10 students were able to enter the exam centre with smiles on their faces rather than the rounded shoulders the kids from other schools have. All did well and the grades are expected to be high this year again, which will be a relief to the parents.



Now a tradition, on the last day of the academic year ending in April, we treated the whole school to ice-creams. Perfect lines of disciplined children from Nursery to Year 10 kept us busy. Helped by Tom and my 7 best Nepalese friends now members of **The Alain Rouveure Nepal Fund, Nepal**, we dished out 14 large cartons of real ice-cream in 1000 cones, heavily loaded, to the 600 students and staff !





Also a yearly tradition, some of the children we sponsor from different districts came to stay with us at the Monkey House in Kathmandu, their home full of happy memories and toys. Our school Head Teacher Aman accompanied the other children by local bus to the capital. After a big healthy breakfast, we took everybody to the Amusement Park for a 4 hour marathon of rides, thrills and laughter.

At 70 this year, I can tell you that I had to keep my wits about. As our children range from 5 years old to 23, we had to operate like a military campaign so no-one would miss the age-appropriate rides but also no-one would be lost or left behind in the crowds.





The Hand Over of the “Pati”, the earthquake-resistant Community Centre in Etay village, was a success and a relief.

It had been 10 years since the terrible and devastating earthquakes of May 2015 that brought so much destruction and distress all over Nepal. Etay did not escape and many lost their homes and had to live under plastic and tin roof with rodents for years. Although most have since rebuild their homes and their lives, the Nepal Government has not made any provisions for future disasters in a land that sits on a major geological fault - We have, thanks to all the generous souls in the UK who supported and helped us finance this essential project.





This unique building with its reclaimed and restored carved windows and pillars looks like the original 18th century edifice that was collapsing. We enlarged the footprint by two folds and it has eye-watering engineering specifications. It was designed to safely shelter over 300 people on three floors in case of future disaster.

The building, under construction, had been used for the past 4 years by the villagers for official functions and festivals whilst we were raising funds to complete the project. It was wonderful and a relief to officially hand over the keys to the Etay Community.

As with every building of note in Nepal, whether a Religious or a Municipal building, a visible record of its date of construction and of the donors is traditionally on display. Instead of names of donors being painted on bricks

inside the Hall under the "Buy a Brick" for donation scheme as originally planned, I was advised that an engraved plaque set at the front of the building would be more in keeping with traditions and would be much longer lasting. As a result, we were able to unveil the list of donors on the smart granite for all to see. Those who contributed to the scheme now have their name for posterity, encouraging perhaps a personal visit...

इटको पाटी सामुदायिक भवन बि.स २०७२ को भूकम्प पछि बेलायत को The Alain Rouveure Nepal Fund द्वारा प्रायोजित गरिएको थियो । भविष्यले यस भूकम्प प्रतिरोधी भवनलाई अघिल्लो १८ औं शताब्दीको परम्परागत संरचना जस्तो देखिने गरी डिजाइन गरेको थियो जुन दुखद घटनाबाट नराम्ररी क्षतिग्रस्त भयो । भवनलाई पहिलाको भन्दा दोब्बर आकारमा बनाइएको छ, भविष्यमा हुने विपत्तिमा समुदायका ३०० भन्दा बढी सदस्यहरूलाई आश्रय मिल्छ , अघिल्लो पुस्ताको परम्परागत सीपको प्रमाणको रूपमा मौलिक भ्याल र ढोकाहरू बचाउन र पुनर्स्थापना गर्न ठूलो प्रयास गरिएको छ ।

The Pati Community Building of Etay was sponsored by The Alain Rouveure Fund from the United Kingdom following the 2015 earthquakes. Alain designed this earthquake-resistant building to look like the previous 18th Century's traditional structure that got badly damaged by the tragic event. The building has been doubled in size from the original, to shelter over 300 members of the community in case of future disaster. Great efforts have been made to save and restore the original windows and doors as a testimony to the traditional skills of previous generations.

संयुक्त अधिराज्यबाट दाताहरूको सूची
List of Donors from United Kingdom





वि.स. २०७२ साल बैशाख १२ गतेको विनाशकारी भूकम्पबाट क्षतिग्रस्त हुँदै सामुदायिक पार्टी बेलारतको Alain Rouveure Nepal Fund नामक संस्था, धुलिखेल नगरपालिका, पञ्चगंगा वासिन्दाहरू र नेपाल सरकारबाट प्रायोजित गरी पुनः निर्माण गरिएको हो । Alain ले यस भूकम्प प्रसिरोधी भवनलाई गुप्त औं शताब्दीको परम्परागत संरचना जस्तो देखिने गरी डिजाइन गरिएको छ । भवन पहिलोको भन्दा दोब्बर आकारमा बनावटको छ । भविष्यमा हुन आउने विपत्तिमा समुदायका ५०० जना बढी सदस्यहरूलाई आश्रय दिने, अधिकतम भुत्ताको परम्परागत सौपको प्रमाणको रूपमा मौलिक स्थलहरू र ठोकाहरू जस्ता र पुनर्स्थापना गर्न ठूलो प्रयास गरिएको छ ।



वि.स. २०७२ साल १२ गतेको विनाशकारी भूकम्पबाट क्षतिग्रस्त हुँदै सामुदायिक पार्टी बेलारतको Alain Rouveure Nepal Fund नामक संस्था, धुलिखेल नगरपालिका, पञ्चगंगा वासिन्दाहरू र नेपाल सरकारबाट प्रायोजित गरी पुनः निर्माण गरिएको हो । Alain ले यस भूकम्प प्रसिरोधी भवनलाई गुप्त औं शताब्दीको परम्परागत संरचना जस्तो देखिने गरी डिजाइन गरिएको छ । भवन पहिलोको भन्दा दोब्बर आकारमा बनावटको छ । भविष्यमा हुन आउने विपत्तिमा समुदायका ५०० जना बढी सदस्यहरूलाई आश्रय दिने, अधिकतम भुत्ताको परम्परागत सौपको प्रमाणको रूपमा मौलिक स्थलहरू र ठोकाहरू जस्ता र पुनर्स्थापना गर्न ठूलो प्रयास गरिएको छ ।



The Community Building of Etay which was damaged in the devastating earthquake on 12th Baisakh of 2072 B.S. (April 25th, 2015) has been reconstructed through joint sponsorship by The Alain Rouveure Nepal Fund, an organization based in United Kingdom, The local residents of Dhulikhel Municipality and the Government of Nepal. Alain has been designed this earthquake-resistant building to look like the previous 18th Century's traditional structure. The building has been doubled in size from the original, to shelter over 500 members of the community in case of future disaster. Great efforts have been made to save and restore the original windows and doors as a testimony to the traditional skills of previous generations.

संयुक्त अधिराज्यबाट दाताहरूको सूची List of Donors from United Kingdom

D&D. Arbuckle	Domleo	M. Jenkins	D. Morton	C. Steen
G. Avery	L. Donado	S. Jepson	M. Mungarven M. & C.	G. Stoyonov
T. Baker	D. DuBois	S. Judson	Nash Lady S. Newbut	B. Stubbs
R. Baldwin	J&J. Draysey	K. Kelly	A. Newman	A&W. S. Parente
J. Balfour-Paul	M. Egan	A. Kench	A. Palin	M. Szymanski
K. Balisagar	M. Elms	R&H. Kettle	A. Paviot	B. Thompson
E. Barks	A. Fisher	R. Lama	S. Peters	J. Thwaites
M&D. Basu	J. Flashman	D&P. Lane	E. Peake	W. Todd
S. Bassford	L. Flower	R. Large	T. Phipps O&R. Pitt	J. Tullett
J. Blackburn	F&H. Furber	D. LePage	J. Plumb	E. Turvey
D&H. Blakemore	R&S. Gardner	J. Lewthwaite	J. Ponsford	R. Twinn
M. Bonnici	R. Gearing	V. Little	S. Priest	C&K. Tyrrell
C&A. Bonwitt	I. Geldet	S. Logan	J. Raymond	P. Walker
S. Bound	B. Gristead	A. Longhurst	C. Roberts	M. Wates
M. Bott	R. Groves	J. Lomas J&T. Lord	K. Piers	D. Watson
M. Boyes	C. Groves	P. Lovelock	M. Roberts	M. Wegg
Dr. J. Bradshaw	B&L. Hall	S. Lunn	L. Ross	B. Weld
P. Britton	P. Hall	D. Matthias	K&E. Rumsey	E. Whitehead
M. Bryant	G&V. Hammersley	E. May	N. Sadler	J. Whybrow
C. Burton	A. Hilyer	J. May	S. Salt	A. W. Legrand
F&P. Catton	A. Hinton	S. McLaren	M. Sanderson	J. Williams
W. Carey	S. Hinton	J. Mayfield	D. Savigar	J. Wilson
R&S. Clarke R&A. Clarke	S. Hogg	J. Middleton	W. Seckler Dr R. Shock	M. Wolfe
C. Clayton	T. Holdsworth	D. Miller	I. Shore	L. Wong
H. Clegg	D. Hollingworth	R. Miller	J. Sidwell	J. Wrench J. Yeo
A&K. Colman	S. Hope	P. Minty	H. Simper	Irene Eugercios (Italy)
P. Conway	K. Howell	V. Monaghan	J. Smith	
S. Cook	C&D. Hutchinson	A. Morris	Dr G. Smith	
M. Cowieson	G. James	T. Morrissey	H. Stewart	
S. Cusack				
R. Darch				
C. DeNahlik				
D&R. Dewbery J & A.				

With Special Thanks to D. Bateman and Subarna Shrestha, (Nepal)

मिति: २०८२/०१/१६ शुक्रबार

ने.स. १९९५ चैलागा नयाँको

Date: 26th April 2025

The brief speech I delivered to the Community and the Local Press reminded everybody of how much impact the 2015 disaster had all over the World and on how many kind souls this predicament had touched in the UK, enough to want to make a lasting difference to folks less fortunate than them.

We are so grateful to the kind souls who donated to this particular project. You have to be extremely proud of this achievement and legacy. The Pati is a safe place, a valuable gift from us to a small rural community that could never have afforded it for its members and future generations.



We would like to thank you for your support of the Galleries and Coffee Shop and for your interest in our small charity, the Alain Rouvere Nepal Fund, for your encouragement and continued financial support.

Together we truly make a real difference where it matters.

You can make your donation by Bank Transfer to

The Alain Rouvere Nepal Fund
LLOYDS TSB 30 95 75
Acc 222 38 668

By cheque made to the ARNF
sent to The Galleries,
Todenham Near Moreton in Marsh, GLOS GL56 9NU

We wish you all the very best and look forward to seeing you soon,

Karin

and the amazing Team at the Galleries and at the ARNF

